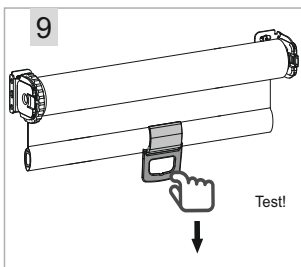
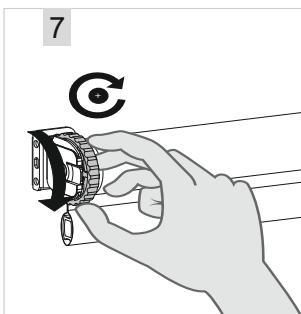
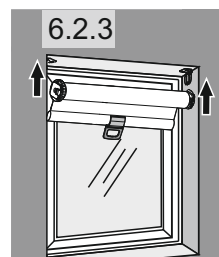
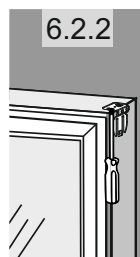
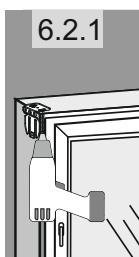
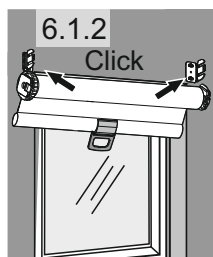
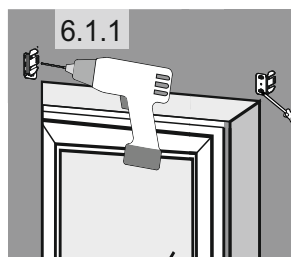
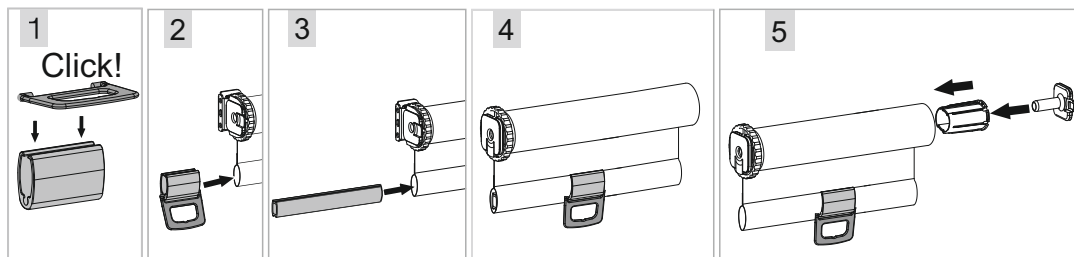
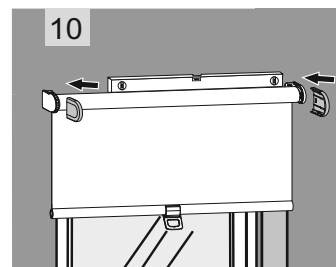
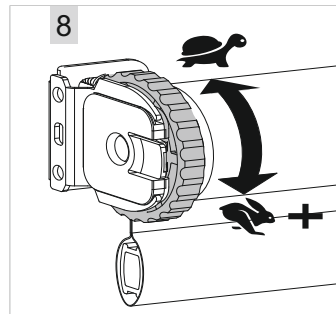


PL Montaż do ściany oraz we wnęce  
 D Montage an der Wand oder am Sturz  
 LV Montāža uz sienas un nišā grioveluose  
 LT Roletų montavimas ant sienos ir roletų

// GB Mounting to the wall or in the window recess  
 // RUS Монтаж к стене или в оконную нишу  
 // EE Paigladus seinale või aknaorva



| 7   |                                   |                        |
|-----|-----------------------------------|------------------------|
| PL  | Ustaw siłę zwijania               |                        |
| GB  | Adjust the speed of operation     |                        |
| DE  | Einstellung der Einrollstärke     |                        |
| RUS | Установи силу подъёма             |                        |
| LV  | Pieregulējiet sarullēšanas ātrumu |                        |
| EE  | Reguleerib kiirust                |                        |
| LT  | Susukimo mechanizmo nustatymas    |                        |
| PL  | Rozmiar                           | Ilość obrotów          |
| GB  | System size                       | Full rotations         |
| DE  | Größe                             | Anzahl der Umdrehungen |
| RUS | Размер                            | Количество поворотов   |
| LV  | Izmērs                            | Rotācijas skaits       |
| EE  | Mõõt                              | Täispööre              |
| LT  | Dydis                             | Apsukimų kiekis        |
|     | 60 cm x 175 cm                    | 1-3                    |
|     | 80 cm x 175 cm                    | 6-8                    |
|     | 100 cm x 175 cm                   | 7-9                    |
|     | 120 cm x 175 cm                   | 4-7                    |
|     | 140 cm x 175 cm                   | 6-8                    |
|     | 160 cm x 175 cm                   | 6-8                    |
|     | 180 cm x 175 cm                   | 6-9                    |



PL Instrukcja zwięzania

D Anleitung für Verkürzung der Breite

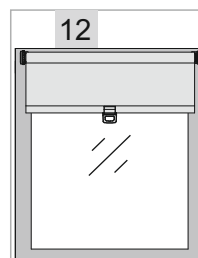
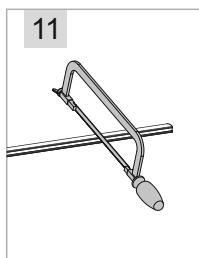
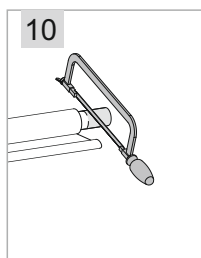
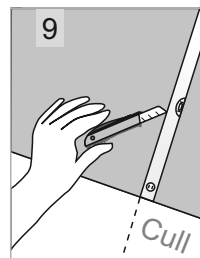
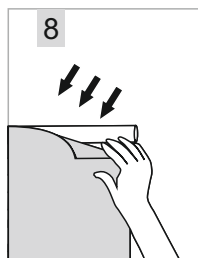
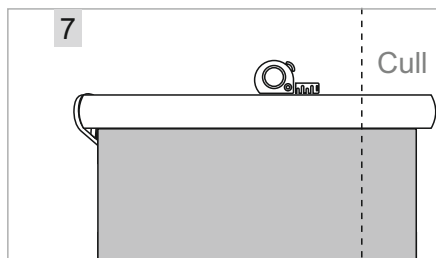
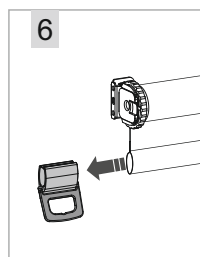
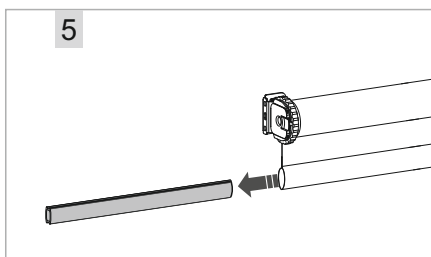
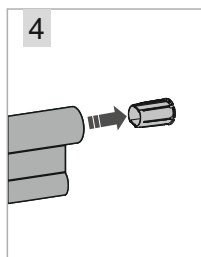
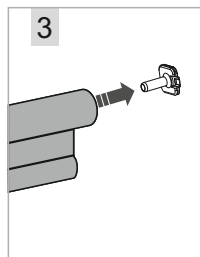
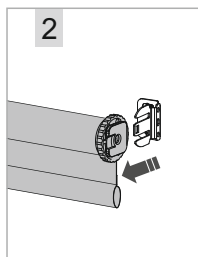
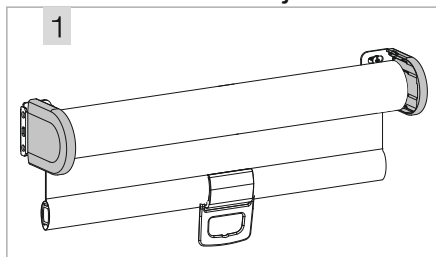
LV Sašaurināšanas instrukcija

LT Siaurinimo instrukcija

// GB Narrowing instruction

// RUS Инструкция суживания

// EE Kitsamakstegemise juhend



DEKORATO

Uwaga! Roleta zwięzana samodzielnie nie podlega reklamacji, gdyż jest to ingerencja mechaniczna w produkt.

Warning! Roller blind which is narrowed by yourself is not subject to complaint because it's a mechanical intervention in the product.

Achtung! Selbst gekürzte Rollos unterliegen nicht der Reklamation, da es sich dabei um einen Produktkeingriff handelt

Внимание! Рулонная штора суженная самостоятельно рекламации не подлежит в связи с тем, что это механическое вмешательство в изделие.

Uzmanību! Patstāvīgi sašaurinātā žalūzija nav pakļaujama reklamācijai sakarā ar mehānisko iejaukšanu produktā.

Ise kitsamakst teatud ruloo osas ei ole võimalik esitada pretensioone, sest toodet on ise muudetud.

Dėmesio! Savarankiškai siaurinant roletus, t.y. mechaniškai keičiant produktą, grąžinimo garantija netaikoma.